

Monday, December 20, 2010 As of 12:06 PM EST New York 36° | 27°

More

 SEARCH

REAL ESTATE

GET 2 WEEKS FREE SUBSCRIBE NOW! THE PRINT JOURNAL THE ONLINE JOURNAL

U.S. Edition Home Today's Paper Video Blogs Journal Community

Log In

World U.S. New York Business Markets Tech Personal Finance Life & Culture Opinion Careers Real Estate Small Business

Buying & Selling House of the Day Second Homes Home & Garden Developments Blog Commercial Property Search

Property Search: For Sale For Rent Auctions Distinctive Properties Find an Agent Vacation Rentals ADVERTISE YOUR PROPERTY »

City, State or Zip United States SEARCH
 Min Price (\$) Max Price (\$) Number of Bedrooms Advanced Search

THE FINEST EXTRAORDINARY LIVING Sotheby's INTERNATIONAL REALTY CLICK TO EXPAND

House of the Day



Waterfront Boston Wharf
 This two-bedroom house on Union Wharf has big and exciting views, floor-to-ceiling windows, a massive private deck, oak and beam-vaulted ceiling.

Brownstone Diary

1/6

Shallow Bathtub Is Deep Disappointment
 With the gut renovation of her Harlem brownstone nearly complete, Julia gets tripped up in her hunt for bathroom fixtures.



Floorplans: Watch the Renovation Evolve
 Photos: Making Progress, Mistakes
 Follow Julia on Facebook

Hong Kong's Most Expensive Homes

Hong Kong's real estate market continued to skyrocket in 2010, as home prices rose 15% through September. Here are the seven biggest residential sales of the year.



Housing-Finance Head Unlikely to be Confirmed

The White House's pick to head the agency that oversees Fannie Mae and Freddie Mac appears unlikely to win Senate confirmation before Congress adjourns.

Hong Kong to Allow Reverse Mortgages After Long Debate

After years of debate, Hong Kong has decided to allow reverse mortgages, a way for elderly to tap the value of their homes in a way that has drawn criticism elsewhere.

Is Your Town 'Certified'?

Some retirement destinations say they are, but that word carries different meanings.



Poll: House of the Week

Vote for your favorite house and discuss.

- Lake Views in Idaho
- On Beacon Hill
- Indianapolis Contemporary
- Texas Style



Adam Carolla, Interior Decorator

The comedian picked paint colors, restored frescoes—and stuck a sports car in his office.
 Photos: Inside Adam Carolla's Man Cave



Condominiums in Hotel Resorts

Luxury condominiums in Park City, Utah, Sarasota, Florida, and Coronado California.
 Photos: Resort Life



Mortgage Rates Jump. Will Home Prices Fall?

Hough: A look at the historical evidence might surprise you.



Commercial



Asian Property Buyers Shop in Japan

As property prices in Japan hover near a two-decade low, a new breed of investor has taken up some space traditionally dominated by Western institutions: high-net-worth Asian individuals and offshore Asian funds.

JRT: Chinese Buy Up Hokkaido Property

A British Tycoon's Vision for Value

John Whittaker, the British billionaire who is on the verge of outmaneuvering mall king David Simon for Capital Shopping Centres, doesn't let a global financial crisis throw him off stride.



Beacon Capital Closes on Loan Modification

Beacon Capital Partners has closed on a modification of a troubled \$2.7 billion loan, which was one of the largest commercial-real-estate loans to ever be securitized.

MarketWatch
 The principles of leadership stay the same.
 WHO ARE THIS YEAR'S WINNERS

Real Estate Video

- News Hub: Higher Rates Threaten Housing Recovery 2:38
- News Hub: Housing Still on Edge as Credit Tightens 3:16
- AM Report: Tax Deal Set to Clear Crucial Hurdle 9:51

Most Popular

Read Emailed Video Commented Searches

- Opinion: Robert M. McDowell: The FCC's Threat to Internet Freedom
- 'Don't Ask' Vote Fallout
- Phone-Wielding Shoppers Strike Fear Into Retailers
- Your Apps Are Watching You
- 9/11 Bill 'Christmas Miracle' Seen

Most Read Articles Feed

New York

December 20, 2010

House of the Day – Penthouse 606 Union Wharf

Waterfront Boston Wharf

This two-bedroom penthouse on Union Wharf has harbor and skyline views, floor-to-ceiling windows, a massive private deck and brick-and-beam vaulted ceilings. (Visit the House of the Day homepage.) – Alexandra Cheney 12/16/10

Print Slide



1/12

More Slideshows

Roger Reiser, the 68-year-old president of Reiser, a processing and packaging equipment company, and his wife, Hanna, purchased this penthouse, which features a separate guest apartment on the top floor of this building on Boston's Union Wharf in 1989. They were drawn to the home because of its huge terraces, says Ms. Reiser, 60, a former

Eric Levin/CL Waterfront Properties

Waterfront Boston Wharf

This two-bedroom penthouse on Union Wharf has harbor and skyline views, floor-to-ceiling windows, a massive private deck and brick-and-beam vaulted ceilings. (Visit the House of the Day homepage.) – Alexandra Cheney 12/16/10

Print Slide



2/12

More Slideshows

Every four or five years the couple renovated parts of the house. They replaced skylights and sliding doors (twice), removed a kitchenette from one of the rooms and a wall unit, pictured.

Eric Levin/CL Waterfront Properties

Waterfront Boston Wharf

This two-bedroom penthouse on Union Wharf has harbor and skyline views, floor-to-ceiling windows, a massive private deck and brick-and-beam vaulted ceilings. (Visit the House of the Day homepage.) – Alexandra Cheney 12/16/10

Print Slide



3/12

More Slideshows

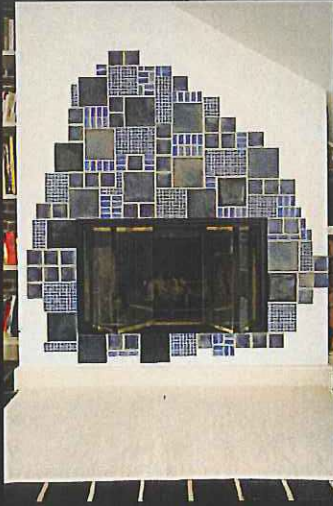
The largest renovation happened in 2003, when Mr. and Ms. Reiser installed a new kitchen. "I wanted it to look like a kitchen and not look like a kitchen because it is so open," says Ms. Reiser. The flooring, original to the space, is a Mexican tile that was installed 32 years ago when the wharf was converted into apartments. In order to try and match

Eric Levin/CL Waterfront Properties

Waterfront Boston Wharf

This two-bedroom penthouse on Union Wharf has harbor and skyline views, floor-to-ceiling windows, a massive private deck and brick-and-beam vaulted ceilings. ([Visit the House of the Day homepage](#)) – Alexandra Cheney 12/16/10

 Print Slide



◀ ▶ 4/12

More Slideshows ▼

The couple continued that element onto the wood-burning fireplace in the living room.

Eric Levin/CL Waterfront Properties

Waterfront Boston Wharf

This two-bedroom penthouse on Union Wharf has harbor and skyline views, floor-to-ceiling windows, a massive private deck and brick-and-beam vaulted ceilings. ([Visit the House of the Day homepage](#)) – Alexandra Cheney 12/16/10

 Print Slide



◀ ▶ 5/12


More Slideshows ▼

In order to cover up a stabilizing beam that runs from the cellar to the roof, the Reisers built a column around the pillar, seen in the far right of the photo. They added another hollow one a decade later.

Eric Levin/CL Waterfront Properties

Waterfront Boston Wharf

This two-bedroom penthouse on Union Wharf has harbor and skyline views, floor-to-ceiling windows, a massive private deck and brick-and-beam vaulted ceilings. ([Visit the House of the Day homepage](#)) – Alexandra Cheney 12/16/10

 Print Slide



◀ ▶ 6/12

More Slideshows ▼

"No unit is as bright and light as ours," says Ms. Reiser, "we just love seeing the skyline of Boston and the big tankers coming in dropping off their stuff." The unit has two bedrooms with floor-to-ceiling windows and three-and-a-half baths. The living room features unobstructed views of the skyline and Boston harbor.

Eric Levin/CL Waterfront Properties

Waterfront Boston Wharf

This two-bedroom penthouse on Union Wharf has harbor and skyline views, floor-to-ceiling windows, a massive private deck and brick-and-beam vaulted ceilings. (Visit the [House of the Day homepage](#).) – Alexandra Cheney 12/16/10

Print Slide



7/12

More Slideshows

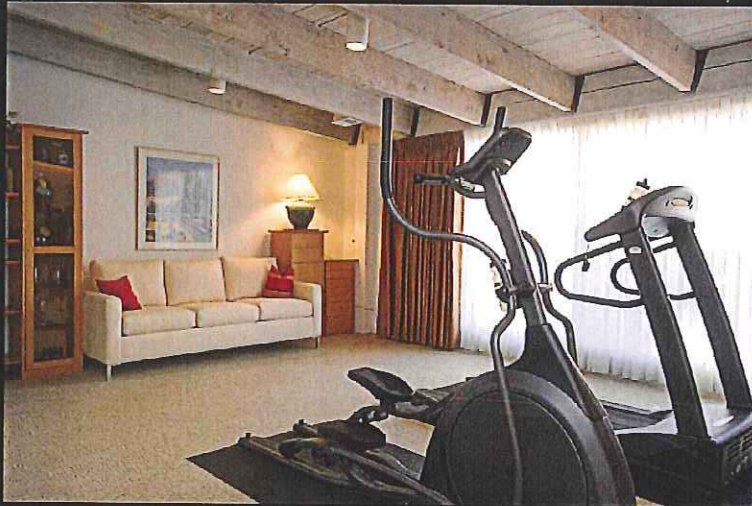
The master bedroom is shown here. The furnishings are not negotiable.

Eric Levin/CL Waterfront Properties

Waterfront Boston Wharf

This two-bedroom penthouse on Union Wharf has harbor and skyline views, floor-to-ceiling windows, a massive private deck and brick-and-beam vaulted ceilings. (Visit the [House of the Day homepage](#).) – Alexandra Cheney 12/16/10

Print Slide



8/12

More Slideshows

Mr. Retser uses the extra bedroom as a workout space, pictured.

Eric Levin/CL Waterfront Properties

Waterfront Boston Wharf

This two-bedroom penthouse on Union Wharf has harbor and skyline views, floor-to-ceiling windows, a massive private deck and brick-and-beam vaulted ceilings. (Visit the [House of the Day homepage](#).) – Alexandra Cheney 12/16/10

Print Slide



9/12

More Slideshows

The home also features a loft sitting area.

Eric Levin/CL Waterfront Properties

Waterfront Boston Wharf

This two-bedroom penthouse on Union Wharf has harbor and skyline views, floor-to-ceiling windows, a massive private deck and brick-and-beam vaulted ceilings. [Visit the House of the Day homepage](#) — Alexandra Cheney 12/16/10

[Print Slide](#)



10/12

[More Slideshows](#)

Although this home has served as the Reisers primary residence, the couple also spends time at their house in Marion, Mass., 20 miles west of Cape Cod. They are looking to downsize. "The terraces are really beautiful but they require a lot of work. I worry about my flowers," says Ms. Reiser. The couple plans on living in the unit until it sells, then

Eric Levin/CL Waterfront Properties

Waterfront Boston Wharf

This two-bedroom penthouse on Union Wharf has harbor and skyline views, floor-to-ceiling windows, a massive private deck and brick-and-beam vaulted ceilings. [Visit the House of the Day homepage](#) — Alexandra Cheney 12/16/10

[Print Slide](#)



11/12

[More Slideshows](#)

They are also looking for a smaller space on the waterfront. Pictured here is the dining room.

Eric Levin/CL Waterfront Properties

Waterfront Boston Wharf

This two-bedroom penthouse on Union Wharf has harbor and skyline views, floor-to-ceiling windows, a massive private deck and brick-and-beam vaulted ceilings. [Visit the House of the Day homepage](#) — Alexandra Cheney 12/16/10

[Print Slide](#)

12/12

[More Slideshows](#)

The unit comes with a parking spot and the building features guest parking. It's listed for \$3.25 million by Carmela Laurella for CL Waterfront Properties. Marina slips are also available.

Eric Levin/CL Waterfront Properties

